

Historic, Archive Document

Do not assume content reflects current scientific knowledge, policies, or practices.

OTTO M. LOCKE NURSERY

62,83

SEASON CATALOG 1933

P. O. Box 731

Phone 141

NEW BRAUNFELS, TEXAS

LIBRARY
RECEIVED
★ JAN 26 1933 ★
U. S. Department of Agriculture.



We Should Grow More Fruit in the Southwest

Otto M. Locke fruit trees have been budded from good, strong, vigorous and heavy-bearing trees.

Apples

DELICIOUS. Large, dark red, flesh is fine-grained; crisp, juicy; very attractive and great market apple; the tree is very hardy and a thrifty grower. Conical in shape.

BLACK TWIG. Large, bright yellow, shaded red. Good quality and fine flavor. Tree hardy.

HELM. One of the best apples to grow in the South. The fruit is large, of typical apple shape, red with white specks, and the quality is not surpassed; flesh cream color. Ripens in July.

TRANSCENDENT CRAB APPLE. An attractive yellow color, splashed and striped with red; bears very young, annual crops thereafter. Buds and blossoms exquisitely beautiful. Ripens in July. Excellent for preserves.

Price: 4 to 6 ft., 50c each, \$5.00 per dozen, \$39.00 per 100.



Delicious

Otto M. Locke's Delicious Plums

BRUCE. Large, red, productive. On account of early ripening, large size, firm shipping quality, productiveness, and deliciousness of flavor, it is considered the most profitable of all plums.

Mc CARTNEY. Originated in Texas. Egg-shaped golden yellow. Very prolific. Best yellow plum.

SHIRO. Rank grower, enormously productive; fruit will keep a month. Is so transparent the pit can be seen through the flesh. Apple-shaped. Early.

GONZALES. A cross between the American and Japanese plum. The fruit is large, sweet, and juicy, and will keep for a week after ripening. Tree good grower and bearer. Ripens middle of June.

HAPPINESS. Trees handsome, leaves very large so sun cannot burn plums. Fruit large, often six inches around; color glowing red, quality very fine. Bears full, but does not overbear, so has no off years.

NONA. Large, oblong, red cheeks; heavy bearer; meat yellow and very sweet; ripens in July; tree a healthy grower and long-lived. One of the best plums for the market.

GOLD. Large, firm, glowing yellow, with some red. Has a wide range, sure bearer, and a money-maker.

BARTLETT. Fruit red, with yellow spots. Flesh salmon-colored. Quality fine, tastes like Bartlett pear. Long-lived tree. Thrives on any poor soil.

AMERICA. Tree very healthy; fruit medium to large, bright golden yellow; firm; stone, medium to large.

SWEET BOTAN. Japanese; one of the finest and oldest varieties. Red with yellow meat, very sweet.

WICKSON. Japanese; tree grows in vase form, sturdy and upright. The fruit is evenly distributed all over the tree. It changes to white when about half-grown, and remains so until a few days before ripening, when it changes to a glowing carmine. Small pit; the flesh is of a fine texture, firm, sugary and delicious. Good keeper. A fine rare plum.

SANTA ROSA. Quality of fruit is unequalled; as a shipping plum it is the peer of them all. Plums are a deep purplish crimson, each fruit averaging six inches in circumference each way; the flesh near the skin is purple shaded with rosy scarlet and pale amber towards the stone, which is very small; the eating quality is unequalled; rich, fragrant, delicious. Ripens early. Tree strong and hardy.

BURBANK. Japanese; named after the introducer of this and most of the other good plums. When fully ripe the fruit is red and deliciously sweet. Best bearing variety.

SATSUMA. A large and well-flavored plum with blood-red flesh, skin bluish red; pit is very small; trees grow large and old, and are very good bearers.

METHLEY. The earliest and best flavored plum known. Ripens May 10. Color bluish red and meat blood red. Fruit sells for \$3.50 per bushel on market when others bring only \$1.00.

Prices: 3 ft., 30c each, \$3.25 per dozen.
5 ft., 50c each, 5.50 per dozen.



Gonzales

Location: On the San Antonio-Austin Highway

To My Customers and Friends



PLEASE accept this catalog as an invitation to visit my Nursery and inspect the dependable nursery stock herein listed and described for you. By looking over this catalog it may suggest many items that will make your home grounds more beautiful, and your orchards more profitable. I depend upon the high quality of my goods to hold my customers and bring me new ones. I feel assured that I can please you, as my prices are very low—quality considered.

Your past patronage I have highly appreciated and desire a continuance of the same.

MY LOCATION:

My establishment is located on the San Antonio-Austin Highway, one-half mile west of the city of New Braunfels.

* * * *

An meinem Kunden die Deutsch schrieben, koennen Ihre Anfragen und Auftraege in Deutscher sprache einsenden. Ich werde alle auftraege prompt und gewissenhaft ausfuehren und garantieren Zufriedenheit.

* * * *

A NUESTROS APRECIABLES CLIENTES MEXICANOS:

Tenemos el gusto de presentarles este nuevo catálogo, esperando que les sea útil en seleccionar sus plantas.

Al hacer sus pedidos, hágannos el favor de escribir su nombre y dirección con toda claridad, para evitar errores.

Pueden escribirnos en castellano, y les aseguramos que sus pedidos serán despachados con todo esmero y puntualidad.

Siempre estamos dispuestos a ayudarles en la selección de árboles, plantas, etc.

OTTO M. LOCKE NURSERY

New Braunfels, Texas.

P. O. Drawer 731

Terms and Conditions of Sale

Prices Quoted in This Catalog are not Postpaid Unless Otherwise Specified.

MANNER OF REMITTING. Please, where possible, send us postoffice or express money order to cover the amount of goods wanted. Should your order amount to one dollar or more, you may deduct the fee or cost of same from the amount of the order. We will accept stamps on orders for less than one dollar.

TERMS. Our terms are cash with order. The prices are net cash. All prices have been so figured and discounts deducted. If we extended

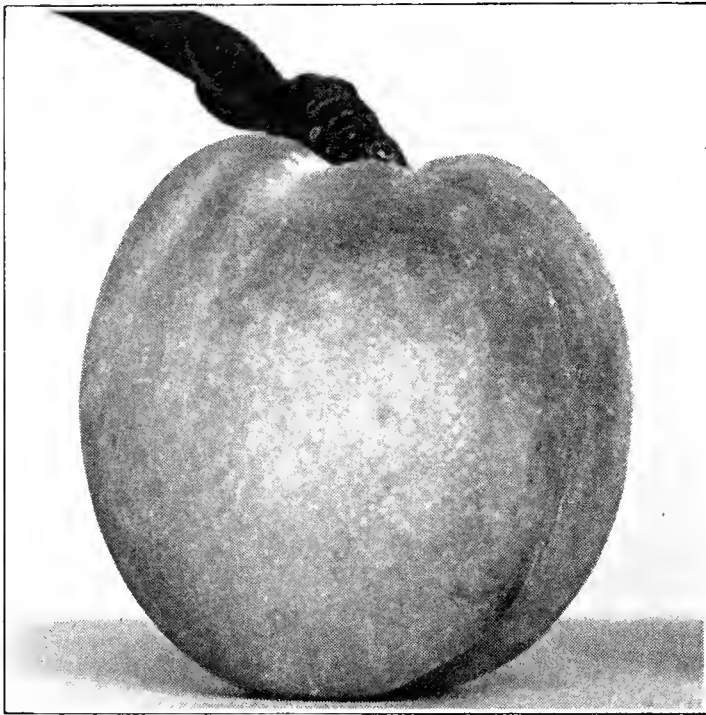
any credit or opened accounts, it would be necessary to have higher or increased prices.

ABOUT WARRANTY. The OTTO M. LOCKE NURSERY gives no warrant, expressed or implied, as to description, quality, productiveness, or any other matter of any seed, bulbs or plants it sells, and will not be responsible for the crop. If purchaser does not accept the goods on these terms, they are at once to be returned, and any money that has been paid for them will be refunded.

Location: On the San Antonio-Austin Highway

Peaches

(Ripening from May 29 to June 10)



Elberta

ELBERTA. The peach that everyone knows. A large yellow freestone, red to the pit. The peach for the market.

CARPENTER (Cling). July 8. Medium size, light color, regular heavy bearer. This is one of the few peaches that are entirely successful from extreme Southern Texas to Oklahoma. Delicious flavor, and best of shipping qualities.

BEST JUNE. Freestone; June 28. Light color, red cheek. Fruit large, most delicious. Regular and prolific bearer. A prize for Central and South Texas.

SMITH. Freestone; July 10. Surest bearer known. Regular and abundant bearer. Deliciously sweet fruit.

AUGBERT. Yellow, resembling Elberta; ripening later; more prolific and fruit is of highest quality. Sometimes called late Elberta.

OLD MIXON CLING. The juicest and best flavored white clingstone peach; of very large size and best bearing qualities.

CHINESE CLING. Spreading habit; healthy; not very prolific; the largest peach in cultivation; flesh white with little red at the seed; tender, and very juicy.

HENRIETTA. A most attractive yellow clingstone. Skin rich yellow with red cheeks. High quality. Excellent table and pickling peach.

Prices: 3 ft., 25c, \$2.75 per doz.; 4 to 5 ft., 35c, \$4.00 per doz.; 5 ft. up, 50c, \$5.50 per doz.

Nectarines

(Like peaches, but smooth skin like plum)

BRECK. A duplicate of Honey Peach in size, shape, and delicious quality, but a perfect nectarine. Sure bearer.

WILKINSON. Of the Honey or Pallas strain, and very valuable as far north as Texas. Very sturdy and good grower.

Prices: 4 to 5 ft., 50c, \$5.00 per dozen.

BEST MAY. A very promising extra early peach; freestone. Hardy and good bearer.

LITTICHAU. A new variety in demand. Early, white freestone, touched with red.

MAYFLOWER. A new variety of extreme early ripening; a late bloomer, and being almost entirely covered with red, it is a good market variety. Tree is a strong, thrifty grower, very prolific; size large, nearly round.

DWARF JAPAN BLOOD. Tree of dwarf habit, surest bearer of all the early peaches; fruit is large, pointed; red cheek and end, and sometimes blood-red flesh.

GREENSBORO. Early and extra large, fine flavor and attractive appearance.

ARP BEAUTY. A rival to Elberta; character, size, color and quality the same, and ripens two to three weeks earlier. The value of this as a market and family peach will be easily seen, and no other statement will be necessary to place it at the head of good peaches.

TRIUMPH. "The earliest yellow peach in the world". A perfect yellow freestone; of excellent quality. A good keeper, very prolific. Young bearer.

HONEY. The sweetest of all peaches we have, and about the best bearer. Late frosts have never killed the young fruit here. Color is attractive and it always sells easily. Honey is about the best peach for general planting we have in the South and Gulf Coast.

BOKARA. The hardiest peach known. It is of fine quality and a good bearer. Does remarkably well here.

MAMIE ROSS (Cling). Very large, nearly covered with a delicate carmine, flesh white, juicy and of good quality; a regular and prolific bearer.

(Ripening June 20 to August 31)

PALLAS. Large, flesh white, melting with a rich, vinous aroma; profuse annual bearer. Sweet as Honey peach.

CARMAN. A large white freestone with red cheeks; originated in Limestone County. Fine flavor; ripens July 5th.

EARLY BELL. Very large; skin white, with red cheeks; flesh white, firm and excellent flavor; tree a rapid grower and very prolific.

KATHERINE. A fine peach, large, white with red cheeks, firm and of good flavor; good bearer; ripens end of June and into July.

HEATH CLING. Ripens about August 25. Medium peach with white flesh. Fine old variety that grows well and bears well.

THURBER. Large white; red cheeks, excellent quality and flavor. Tree vigorous and sure bearer. June and July.

LEONA. Best yellow freestone peach, ripens week earlier than Elbert; large, good grower.

J. H. HALE. Huge; beautiful golden yellow; freestone; solid, delicious, round as a ball; a great shipper and splendid keeper; vigorous, sturdy trees.

Pears

(In order of ripening)

LE CONTE. Of remarkable vigor and beauty of growth. The fruit is bell-shaped, of a rich creamy yellow when ripe, very smooth and fine looking. Very good shipper. Ripens in July. Often the fruit softens on the tree. It can, however, be eaten even if not entirely soft, for the meat is of fine texture and very sweet.

KIEFFER. Called by many the "Queen of Pears". Fruit large to very large, skin yellow with a brilliant vermilion cheek, flesh brittle, very juicy, with a marked musky aroma. Tree very vigorous and very prolific. Considered the best all-around pear.

GARBER. Oriental strain, like the Le Conte fruit, and size, shape and color resembles the Kieffer. Ripe three weeks before the Kieffer.

PINEAPPLE SAND PEAR. Valuable for the South as a canning pear. Flesh is coarse, about the quality of Kieffer. Tree a good grower, not subject to blight; good bearer. Ripens in August. Prices: 3 ft., 35c, \$4.00 per doz.; 4 to 5 ft., 50c, \$5.00 per doz.; 6 ft., 75c, \$8.00 per doz.

Quinces

ORANGE. Large, roundish, bright golden yellow; cooks tender and is of excellent flavor. Valuable for preserves and flavoring; very productive; one of the most popular and extensively cultivated of old varieties. Ripens in October.

MEECH. Fruit yellow and of fine flavor. Tree very productive. Flesh cooks as tender as the apple. Price: small, 40c each; large, 50c each.

Berries

AUSTIN MAYES DEWBERRY. Very large fruit, highly flavored. It roots deep, is very prolific and never fails. 25c dozen, \$2.00 per 100.

MCDONALD BERRY. It is hard to decide whether this is a dewberry or a blackberry. It bears in clusters like a blackberry, but tips like a dewberry. It grows on any soil and is most productive of all berries. Berries large and juicy. 35c per dozen, \$2.50 per 100.

AUSTIN MAYES THORNLESS. Like the Austin Mayes Dewberry, only that it has no thorns, which makes picking quite easy. Highly recommended. 50c per dozen, \$3.50 per 100.

MISSIONARY (Strawberry). Most extensively planted. Large, sweet berries; very hardy. 50c per 100, \$5.00 per 1000.

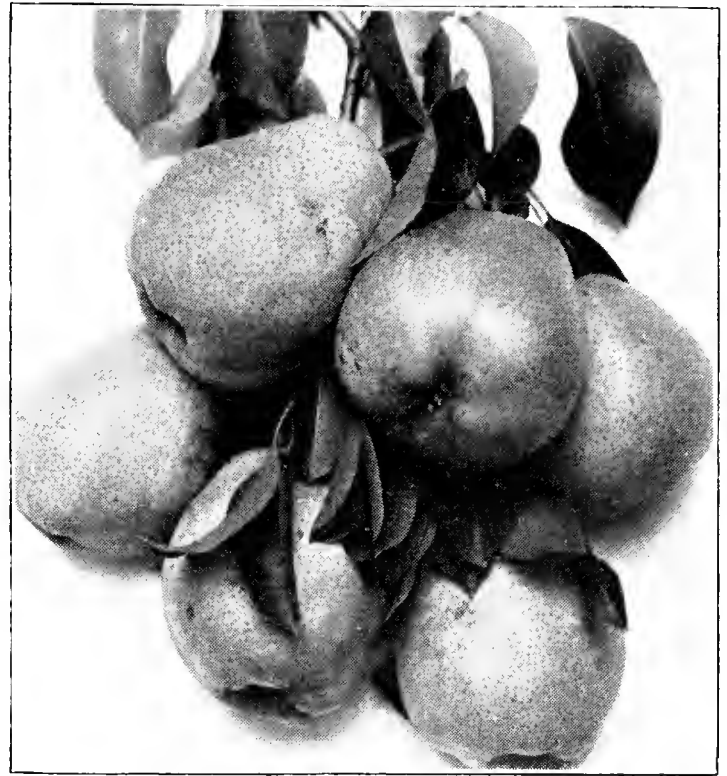
TEXAS (Strawberry). The money-making strawberry of the South. Besides being an immense producer of fine flavor and beautiful color, it is a thrifty grower and a splendid drought resister. 50c per 100, \$5.00 per 1000.

Cherries

COMPASS CHERRY. In size larger than the largest cherry; rather a small plum. It will succeed where the true cherry will not. The tree is vigorous and bears well; fruit is red; fine for jellies and preserves. Ripens in June.

EARLY RICHMOND. Early, bright red, acid. Tree strong grower.

Price, 40c each; large, 50c each.



Kieffer

Apricots

ROYAL. Fruit large, oval; color of skin dull yellow, tinted with red on the sunny side; flesh pale orange color, firm, juicy, rich and vinous; freestone. Ripens end of June.

NEVERFAIL. Large, excellent; an old favorite and one of the best bearers. This is the best of all apricots.

CLUSTER. Grows well and bears young, late bloomer. A good tree to plant; does not require cultivating.

Price: 3 ft., 40c; 5 ft., 50c.

Pomegranates

OLD FAVORITE. It is the best of all the fruit pomegranates. The fruit is the very largest, refreshing and sweet. The tree or shrub is extremely hardy and has glossy green leaves. Flowers are large and crimson. 50c each, \$5.00 per dozen.

Mulberries

HICKS' EVERBEARING. Profuse; ripens fruit for three months, fine grower for shade and suited for the fowl yard.

RUSSIAN. Unquestionably the best shade tree. The tree is very hardy and long-lived. Grows rapidly to a beautiful round shape. The fruit is small and does not drop from the tree when ripe; some trees do not produce fruit at all.

BLACK ENGLISH. A very quick growing mulberry, with very large and well-shaped leaves. The fruit is large and black in color; stem is very straight, and can be topped at any desirable height. Good bearer.

Prices: 5 to 6 ft., 40c each, \$4.50 per dozen; 6 to 8 ft., 50c each, \$5.50 per dozen.

Citrus Fruits

SATSUMA ORANGE. Hardest of the sweet orange family. Fruit reddish yellow, almost seedless, very sweet, and abundant bearer. Strong specimen, 75c each.

MARSH SEEDLESS GRAPEFRUIT. This is the best and most satisfactory variety, as it has a mild, sweet flavor most people prefer. Strong specimen, \$1.00.

NEW WONDER LEMON. This is a true everbearing variety. A tree six feet high has been known to bear from 80 to 90 lemons, some of which weighed from 3 to 4 pounds each. Will fruit freely the second year. Strong specimen, 50c.

KUMQUAT. This is the smallest edible citrus fruit. It is a very beautiful tree and bears heavily. The fruit is of the size and shape of a pigeon egg and is eaten, skin and all, just as it is picked off the tree. Strong specimen, \$1.00 each.

Japan Persimmons

HACHIYA. Very large, oblong, conical, with a sharp point; very showy; diameter $3\frac{1}{2}$ inches longitudinally and 3 inches transversely; color of skin, reddish yellow, with occasional dark spots or blotches and rings at apex; flesh dark yellow; some seed; astringed until fully ripe, then very good. Tree vigorous and very shapely.

HYAKUME. A large persimmon, varying from roundish oblong to roundish oblate, but always somewhat flattened at both ends, generally slightly depressed at the point opposite the stem; nearly always marked with rings and veins at the apex; skin light buffish yellow, flesh dark brown, sweet, crisp and meaty; not stringent; good while still hard; a good keeper; one of the best market sorts. Trees good growers and sure bearers.

TANE-NASHI. Very large, roundish, conical, pointed; very smooth and symmetrical; color of skin light yellow, changing to bright red at full maturity; flesh yellow, generally seedless, astringent until fully ripe, then one of the best.

EUREKA. The finest of all persimmons. Large, very sweet, and excellent shipper. Entirely seedless. Flesh very juicy when fully ripe. Trees are vigorous growers and bear well.

TAMEPAN. Large, flat fruit which has a ring around the center. Excellent color and fruit. Sweetest of them all. Sells well. Tree vigorous grower. 2-yr. trees, 50c; 3-yr. trees, 75c.

Figs

BROWN TURKEY. Medium, brown, very sweet and excellent; very prolific and hardy. The most reliable fig for open field culture.

CELESTIAL. Small pale violet; very sweet, prolific and hardy.

GREEN ISCHIA. Green; medium size; of excellent quality.

MAGNOLIA. Large, rich fruit, yellowish brown. Small one-year trees bear fruit first summer.

Prices: 25c each, \$2.50 per dozen.

Grapes

Grapes are easily grown. They produce a crop every year. Plant a few Grapes for home use.



Grapes—Carman

CARMAN. Dark red, fine quality. For hardiness and regular crops it is the equal of Herbeumont and Black Spanish, although it is larger.

GUMERA. Very new. Excellent table grape, on account of meat value, juicy contents and wonderful flavor as well as being a beautiful appearing fruit. The product is fine for jelly, preserves, grape juice and grape wine. Very hardy and prolific. Grapes as large as a man's thumb, and borne in heavy clusters. Give this grape a try and you will never want a different grape in your vineyard. 1-year plants, 35c; 2-year, 50c.

ALLAGA GRAPE. This is another of the Grecian grapes and cannot be recommended too highly. Very hardy and productive. Excellent table as well as jelly grape. Deliciously flavored. 1-year, 35c; 2-year, 50c.

Prices on Grapes: 20c each, \$2.00 per dozen, \$15.00 per 100.

Grapes (Continued)

MUENCH. Vine very vigorous and free from all diseases; clusters large to very large; purplish black; sells readily in the market; fine for table.

ELLEN SCOTT. Vine beautiful, healthy, prolific; clusters large to very large, conical; berry large, translucent, violet covered with delicate bloom; skin thin and tough; pulp tender, very juicy and pure; high quality.

EDNA. Finest white grape in Texas. A tested variety gave largest crops regularly of any white grape ever introduced. No vineyard complete without this wonderful white grape. Very hardy.

BLACK SPANISH (Jacques, Le Noir, Blue French). Berry small; large clusters; red wine. Hardy.

HERBEMONT (McKee, Bottsi, Brown French). Small; large clusters; purple; finest quality; table and preserving grape; best old grape for Southwest Texas.

R. W. MUNSON. Growth strong; clusters medium to large, cylindrical, often shouldered; berries black, never crack; pulp tender, juicy, very fine quality; good wine grape.

Prices on Grapes: 20c each; \$2.00 per dozen; \$15.00 per 100.

Plant a Few Acres of Pecan Trees

They Will Not Interfere with Other Crops and Will Pay You a Profit.

BURKETT. Large nut that is almost round. Thin shell, excellent flavor. Bears young and every year.

DELMAS. Regular bearer, large nut, fine flavor, and well filled kernel. If a shade tree is desired as well as a useful tree, plant a Delmas. Tree grows dense and very round in shape.

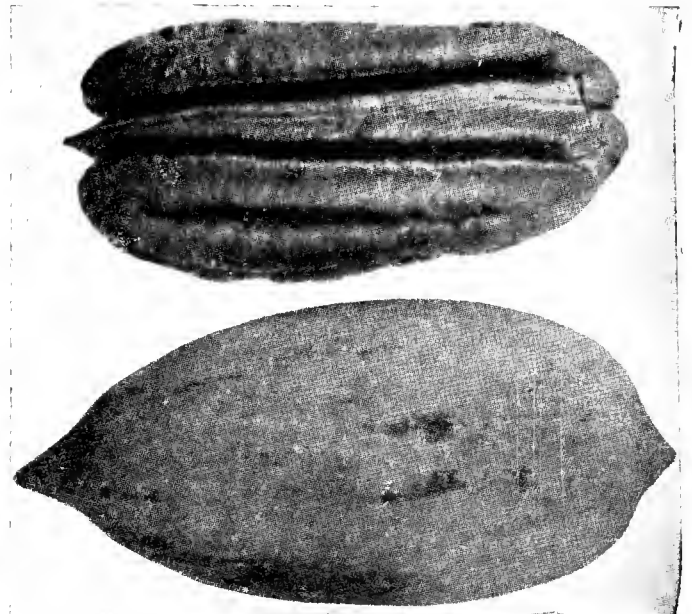
HALBERT. Almost round, medium size, thin shell. Prolific. An all-around pecan. Perhaps the youngest bearer known.

SUCCESS. One of the finest; shell thin, nut is large, round and well filled. Good flavor. Highly prolific.

MONEYMAKER. Large size nut, blunt on both ends. Thin shell. Tree of healthy and vigorous growth that is not subject to blight.

STUART. One of the oldest of the named varieties, but somewhat short; ovoid in shape, shell thin, partitions somewhat corky, kernel plump, quality very good.

MAHAN PECAN. This is one of the greatest sensations in horticulture. Mr. Mahan of the Monticello Nursery Co. of Monticello, Florida, paid \$5,000.00 for the original tree in order that he could have the scions for his extensive propagation. The tree is a vigorous grower, unusually large foliage, of giant size nuts of thin shell, very sweet, fine quality and attractive, 33 nuts to the pound. The trees offered will be labeled "Mahan" with an aluminum label and copyright, at the price of \$5.00 each. This is the same price asked by the parent nursery.



Delmas Pecan

EASTERN SCHLEY. This is the finest nut of them all. Large, sweet, well filled nut with paper-thin shell. Best seller of any nut.

WESTERN SCHLEY. Prolific bearer, nut longer than Eastern Schley. Kernel excellent flavor and quality.

PRICES

2 to 3 feet	\$.60
3 to 4 feet	1.00
4 to 5 feet	1.50
5 to 7 feet	1.75
8 to 9 feet	2.50
10 feet	3.00

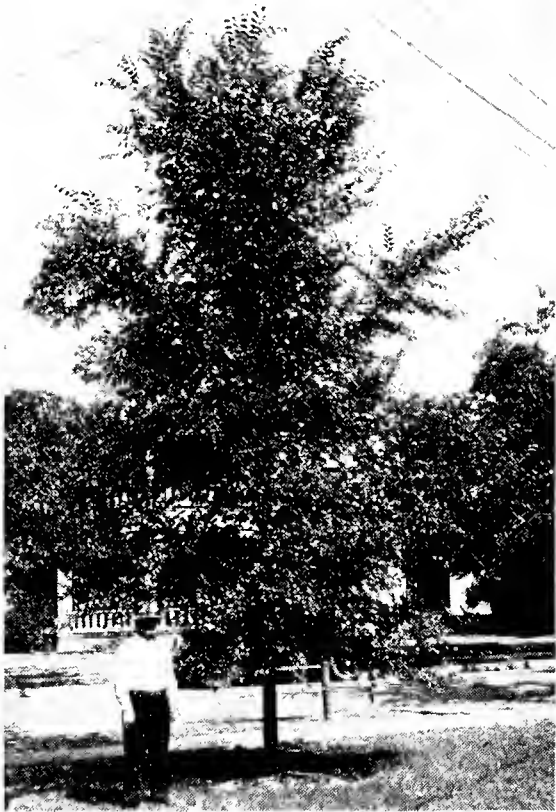
Walnuts

JAPAN WALNUTS. Trees extremely hardy and vigorous growers. Nuts sweet and of best quality; very productive. 4 to 5 feet, \$1.00.

Location: On the San Antonio-Austin Highway

Shade and Ornamental Trees for the Southland

No home can afford to be without shade trees at these exceptionally low prices.



Chinese Elm

CHINESE ELM. Quickest growing elm tree. Makes a quick shade; does not break. The finest shade tree for street planting. 5 ft. up, 75c; 7 ft. up, \$1.25.

WEeping MULBERRY. Forms a perfect shaped head, with long, slender, willowy branches, drooping to the ground in light, airy gracefulness. Beautiful foliage, hardy, safe and easy to transplant. 6 to 8 ft., \$2.50.

WEeping WILLOW. A grand old tree for the cemetery and for the lawn. Should be planted in deep, rich soil where it is constantly moist. 4 ft., 50c; 6 ft., 75c.

MAGNOLIA GRANDIFLORA. See Evergreens, Page 11.

ARIZONA ASH. A desirable tree, either for street or yard planting, and adapted to arid region; does not require much moisture. Price: 6 ft., \$1.00.

AMERICAN ELM. Long-limbed, fast growing, is always admired; grows well on any ordinary soil. 6 ft., 50c.

UMBRELLA CHINA. Finest and quickest growing of all shade trees. 4 ft. up, 35c; 6 ft. up, 50c; 7 ft. up, 75c.

CAROLINA POPLAR. A successful shade tree. Resembles Cottonwood. 4 ft. up, 50c; 6 ft. up, 75c.

JUDAS TREE OR RED BUD. Long-lived; very hard wood; large round leaves, making a dense shade. The first tree to bloom in spring; has very pretty red flowers which last a few weeks. 4 ft. up, 50c; 8 ft. up, 75c.

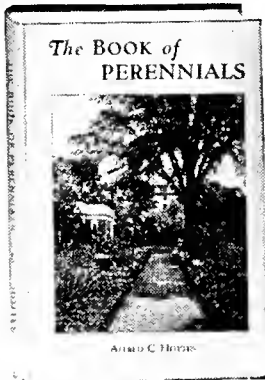
HUISACHE. Beautiful fern-like foliage. Gorgeous displays, yellow flowers in spring. Hardy. Large specimens, \$1.00 each; extra large, \$2.50 each.

VARNISH TREE (*Streculia Platanaefolia*). A very desirable shade tree of rapid growth. Leaves large, bark very smooth and green. 5 ft. up, 50c; 8 ft. up, 75c.

CYPRESS, NATIVE (*Tacodium Distichum*). A grand, stately tree. Needs plenty of moisture. 4 ft., \$1.00 each.

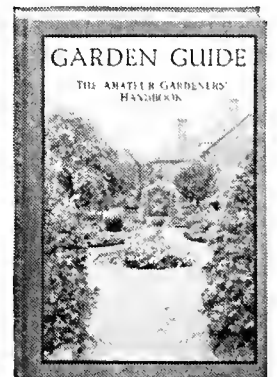
LIGUSTRUM JAPONICUM. Makes a splendid evergreen shade tree; leaves dark green, pointed. Produces large bunches of creamy white flowers, followed in autumn by purple berries. 4 ft., 50c; 5 ft. up, 75c; 7 ft. up, \$1.00 each.

SYCAMORE. A lofty wide-spreading tree, hand-shaped leaves; valuable for its attractive foliage and free growth. 5 to 6 ft., 75c; 6 to 8 ft., \$1.00 each.



De LaMare Garden Books

I will be able to supply you with any books pertaining to garden culture, bulb culture, landscaping, plant culture, pest control. If interested in books of any kind pertaining to Horticulture, please write for free illustrated, descriptive, 35-page booklet.



Birds

SHELL PARRAKEETS OR LOVE BIRDS. These are very interesting and beautiful plumed pets. Come in colors of green, yellow, blue and white. Green, \$3.00 per pair; Yellow, \$3.50 per pair; Blue, \$6.50 per pair; White, \$9.00 per pair.

PARROTS AND MONKEYS. Write for prices.

Location: On the San Antonio-Austin Highway

Palms

SABAL PALMETTO. The famed cabbage palmetto. This forms a tall tree with a large head of fan leaves. This tree can be grown all over the South. 1-ft. plants, 50c; larger specimens, \$1.00 and up.

WASHINGTONIA (*Prischaridia Filifera*). One of the hardiest palms; large, fan-shaped leaves; can be planted in the open ground. Quick growing. 2 ft., \$1.00; larger specimens, \$2.00 and up.

Ornamental Grasses, Yucca, Etc.

BAMBOO. Grows ten to twenty feet high, even on uplands. Excellent for individual or background plantings. Large clump, 50c.

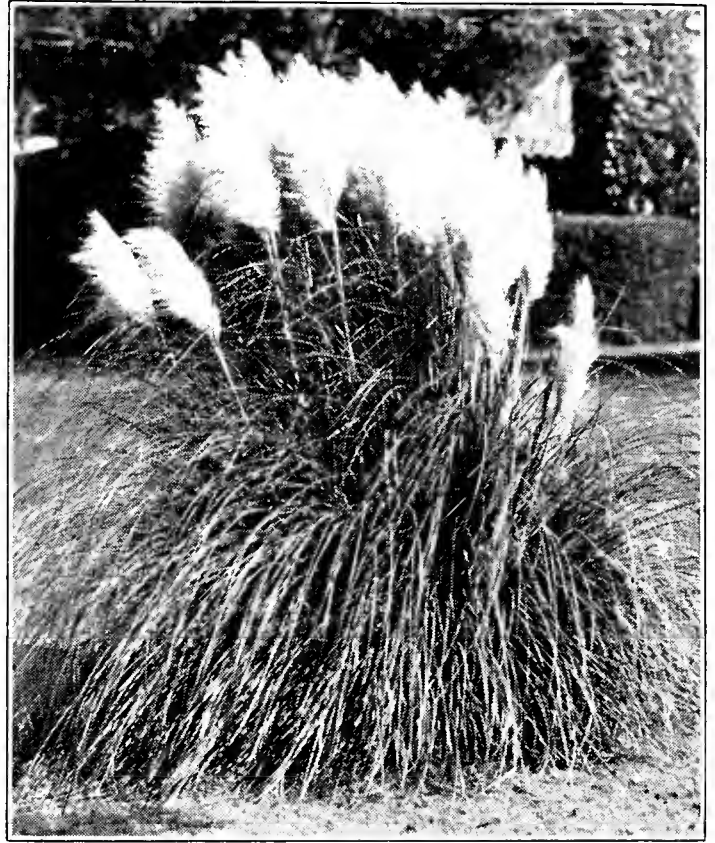
ZEBRA GRASS. The blades of this grass are striped, hence its name. Produces fine lace-like plumes which last for years if cut when fresh; perfectly hardy. 25c and 50c each.

PENNISETUM. Dwarf grass, growing eighteen inches tall, with beautiful white plumes. Fine for bedding. Small clumps, 25c each.

UMBRELLA GRASS. Very beautiful, growing about three feet high, many stalks from each root with umbrella-like tufts of leaves at top. Fine for rock gardens and aquatic gardens. Clumps, 25c each.

DASYLIRION. Older plants have a hundred or more leaves symmetrically arranged of a brilliant intense green every day in the year. Fine for large urns, rockeries and lawns. Plants, with leaves 2 ft., \$1.00 each.

YUCCA FILAMENTOSA—evergreen. This plant is an object of beauty the year around. The leaves are two feet long, bristling out of all angles, with 100 to 200 bell-shaped, creamy white blossoms hanging from branching arms. Perfectly hardy and lives to a great age. Two years old, each, 25c.



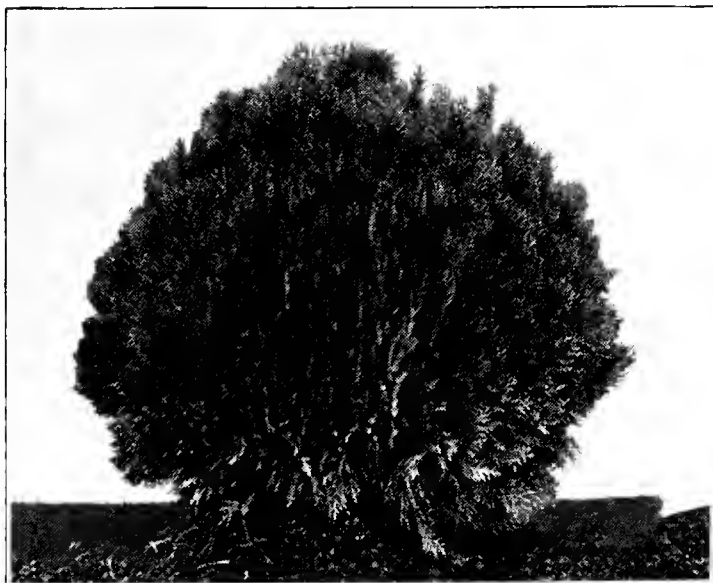
Pampas Grass

PAMPAS GRASS. Used for grouping on a lawn. The plant itself is very ornamental with its long drooping blades, and in August it produces great plumes of silvery white feathery plumes which present a very striking and pleasing appearance. 50c to \$1.00 each.

RED YUCCA (*Hesperalos Parviflora*). One of the rare plants in existence. Dark green, pliant leaves. Flower stalks 5 to 6 feet, covered with scapes of brilliant coral-red flowers from April until late summer. For beauty and hardiness we can hardly name an equal. Blooming size plants, 50c each.

Enjoy Otto Locke's Beautiful Evergreens the Year 'Round

(All balled and burlapped unless specified)



Bonita

BONITA ARBOR VITAE. Perfect round growth, dwarf and as round as a ball; has the beautiful green color of the Arbor Vitae, but the leaves are much thinner. This is the best adapted Arbor Vitae to plant in the cemetery, as it has the round, compact form, and never grows over three feet high. Price: 12 inches, \$1.00; larger specimens, \$1.50 and up.

CHINESE ARBOR VITAE. Fast grower, always green. Good for screens or windbreaks. This variety by proper pruning may be kept any size and shape desired. In fact, annual pruning is necessary for best results. Price: 1-foot, 35c; larger specimens, 50c and up.

ROSEDALE ARBOR VITAE. Very compact growth, with sugar-loaf form of the Golden Arbor Vitae, but with fine cedar-like foliage of a bluish cast. Makes a beautiful ornament, perfectly hardy and vigorous growth. 1-foot, 75c each; larger specimens, \$1.00 and up.

GOLDEN ARBOR VITAE. Dwarf compact grower, very symmetrical. Tips of all branches assume bright golden tints; used extensively for grouping in front of the taller specimens; very hardy; retains beauty with age. Most popular arborvitae. 18 inches, \$1.00 each; 4 ft., \$2.50.

TALL HYBRID ARBOR VITAE. A type very distinctive for its rather loose but gracefully waving, beautiful, light green foliage. A hybrid between arbor vitae and cypressus. Sizes from 1 to 6 ft., scale 75c a foot.

BERKMAN'S AUREA NANA. A new Golden Arbor Vitae, of a dwarf and compact habit; a perfect gem for small gardens or cemetery lots; will not grow higher than 6 to 8 feet. 18 inches, \$1.00; larger specimens, \$2.00 up.

GOLDEN PYRAMIDALIS ARBOR VITAE. Like Golden, but grows tall and slender. Very ornamental. 18 inches, \$1.00; larger specimens, \$2.00 up.

TEXAS BLUE ARBOR VITAE (*texana glauca*). Tall, spreading, upright grower, rather open. Beautiful blue-green color. Very desirable for adding color. Hardy. 18 inches, 75c; large specimens, \$2.00 each.

Cypress

ARIZONA CYPRESS. Attractive for its silvery blue color. Beautiful blue or glaucous pyramidal tree, horizontal branching, dense foliage, making perfectly shaped specimens. Fine specimens, \$1.00 to \$3.00.

CYPRESS, ROYAL ITALIAN (*Pyramidalis*). A tall, slender evergreen tree of erect habit and dark green foliage. Unexcelled for group plantings, used almost exclusively in landscaping for accent purposes. A rapid grower. 2 ft., \$1.00; larger specimens, 75c a foot.

CYPRESS, SPREADING ITALIAN (*Horizontalis*). Lovely spreading type, rich in appearance with horizontal spreading foliage. Forms a cone-shaped tree of great beauty and one of the best for individual specimens. Price scale, 75c a foot.

Cedars

CEDRUS DEODORA. Cedar of the Himalayan Mountains. Towering pyramidal form, growing from broad base at ground to point at tip. Horizontal branches, graceful, beautiful, silver-green foliage. Very fine for specimen planting. Adds grace and beauty to the finest grounds. The most beautiful tree. 18 inches, \$1.75; larger specimens, \$2.50 up.

MOUNTAIN CEDAR. Nice round trees, suited for specimen planting. 2 to 3 ft., 75c.

TAMARIX OR SALT CEDAR

ODESSEANA. Neat grayish foliage. Rose-colored flowers in great profusion.

AFRICANA. Upright growth, small pink flowers on long stems. 4 to 5 ft., 30c each. Not balled.

Fir

CHINESE FIR. Beautiful evergreen with leaves 1½ inches long, usually rounded and notched at apex. Beautiful green which turns reddish brown in winter. 2 ft., \$2.00 each.

Loquat

JAPAN MEDLAR (plum). This is one of the most handsome of the large-leaf evergreens. Grows into a good-sized tree. Blooms in fall, and its fruit ripens in winter. Fruit is the size of a wild goose plum, round or oblong, bright yellow, and produced in clusters; sub-acid and refreshing. Excellent specimens, 50c to \$3.00.

CAPE JASMINE. Flowers, large, white, fragrant; foliage rich, glossy. Price, 50c each.

Junipers

PFITZER JUNIPER. Most handsome of the Juniper varieties; wide-spread horizontal branches and immense flat, irregular head of plush green foliage. The most satisfactory of the low spreading of prostrate type that we recommend for the South. Unusually beautiful in its distinctive, grayish color and irregular, flat spreading growth. Fine specimens, \$1.50 to \$3.00 each.

IRISH JUNIPER. Slow growing, horizontal graceful branches. Dwarf. Very ornamental. Specimens, \$1.00 and up.

SPINY GREEK JUNIPER. A very ornamental tree decidedly conical in form, well branched and densely clothed with grayish-green, glaucous foliage. A distinct species of great beauty. Excellent for conifer groups, for specimens or for tubs and urns. Beautiful specimens, \$1.00 and up.



Arizona Cypress

Ligustrums

LUCIDUM (Wax Leaf). Extra dense compact growth with very dark waxy green thick leaves. Very hardy and thrives in most any kind of soil with no particular attention or care. A most satisfactory evergreen for general planting. Specimens, 50c to \$3.00.

LIGUSTRUM JAPONICUM (Bush). A handsome evergreen shrub with thick, dark, glossy green leaves. Small, creamy white blooms in early spring followed by bluish black berries. Used for hedges and foundation planting. Prices to follow are unballied. Add 25c extra if you want them ballied. 12 to 18 inches, 10c each, \$8.00 per 100; 18 to 24 inches, 20c each, \$18.00 per 100; larger specimens, 50c to \$1.00 each.

AMOR RIVER PRIVET (South). Of similar form and habit to the California type; not so shiny, but hardier; leaves small, round, very dense. Makes the finest hedge. Prices not ballied: 2 ft., 10c; \$1.00 per doz.; \$9.00 per 100. Specimens ballied, 50c and up.

CALIFORNIA PRIVET. Splendid for specimens, screens, hedges. Prices not ballied: 2 to 3 ft., 10c each. For hedging, \$7.50 per 100. Extra heavy two years, \$9.00 per 100.

Euonymus

EUONYMUS JAPONICA. One of the fastest growing evergreen shrubs, suitable for either hedge or single specimen; can be greatly improved by cutting back to induce bushy form. No evergreen has such a bright dark green color in winter as this. For quick results this excels. 2-year plants, 50c; larger, \$1.00.

EUONYMUS ALBO-MARGINATUS. Same as above, with exception leaves have a silver margin. 50c and up.

EUONYMUS AUREA VARIEGATUS. Same as above with a gold margin instead of silver. \$1.00 each and up.

EUONYMUS NANUS PULCHELLUS. This is the dwarf variety. 25c each, \$20.00 per 100.

Pittosporum

PITTOSPORUM TOBIRA. One of the finest evergreen shrubs. Well adapted for trimming. Grows round and compact. Specimens, 75c to \$2.50.

PITTOSPORUM VARIEGATUM (Silver or Whitespot). A wide-spreading, dense, round headed type, with light green foliage tipped with white, clustered at the end of branches. Beautiful specimens \$1.00 to \$3.00 each.

NANDINA DOMESTICA. Evergreen shrub with reed-like stems springing from roots. Leaves glossy green tinged with red. In winter beautiful bronze tones are assumed. Flowers white followed by masses of small bright red berries that are held all winter. Price, 35c, 50c to \$1.25 each.

PHOTINIA DENTATA. Handsome, strong growing shrub; leaves large, deeply serragated, glossy green with reddish hue when small; upright habit; very striking; hardy. Fine specimens, \$1.50 and up.



Japanese Ligustrum

Buxus Arborea

ENGLISH TREE BOX. Succeeds almost everywhere. It is of rather slow growth compared with other evergreens. Remarkable for its longevity, and finally gets to be 10 to 12 feet high. The Buxus makes the finest evergreen hedge. Small for hedges. 25c each, \$2.50 per dozen; strong, large specimens, \$1.00 to \$2.50 each.

Lavender

LAVENDULA VERA, or **TRUE LAVENDER**. Very small shrub with gray downy foliage; very aromatic; blue flowers; hardy. Fine specimens, \$1.00 and up.

SANTOLINA (Cotton) **LAVENDER**. A sweet smelling dwarf, evergreen perennial, with silver white foliage, useful as rock or border plants, also largely used in carpet bedding. 50c to \$1.00 each.

Magnolia

MAGNOLIA GRANDIFLORA. Its large, shining green foliage accompanied in summer with large fragrant, milky-white flowers, places it pre-eminently above all other evergreens. Should be handled and planted very carefully, as they are extremely sensitive to injury from drying. 2 ft., 75c each; 3 ft., \$1.00 each; 3 to 4 ft., \$1.75.

Cydonia Japonica

SCARLET FLOWERING QUINCE. In early spring plant is covered with intensely colored scarlet flowers. Growth bushy. 50c each, not ballied.

Rosemary

Evergreen with greyish green foliage, heavily scented shrub, white blossoms with purple stripes. Hardy. Used for medicinal purposes. \$1.00 each.



Sunburst



Claudius Pernet



Lady Hillingdon



Red Radiance



Hadley



Ophelia



Francis Scott Key



K. A. Victoria

Otto M. Locke's Everblooming Roses for the Southland

Crimson and Red

Prices: 1-year, 30c. \$3.00 dozen; 2-year, selected, 40c. \$4.25 dozen.

AMBASSADOR. Salmon-pink sport of Talisman with a solid orange bud without shadings. One of the best of the many Talisman sports. \$1.00 each.

AMERICAN BEAUTY. Hardy roses of largest size, having the everblooming qualities of the Tea Rose with the delicious odor of the Damask or Moss Rose. In color it is brilliant red, shading to a rich carmine crimson. The flowers are borne on long, stiff stems, hence a splendid rose for cutting.

BABY RAMBLER (Mme. Levasseur). This rose is so well-known as hardly to need a word of description. It is a dwarf form of Crimson Rambler, which produces flowers absolutely continuously. Invaluable either for pots or for outside bedding.

BALDWIN. A new hybrid Tea Rose. About the best crimson outdoor bedding rose. It is very strong growing and healthy, producing large and double roses of a glowing carmine color, which are as sweet as a June rose.

BLACK PRINCE. Velvety crimson with shadings of purplish-black. Upright, strong, profusion of flowers.

HOOSIER BEAUTY—HT. Deep crimson with darker shadings, strong and vigorous. One of the best Hybrid Tea Roses ever produced.

CRUSADER. A wonderful crimson. A big, strong-growing, robust, and rugged variety, with a heavy growth. A rich, velvety, crimson rose that is free growing and free-blooming.

ETOILE De FRANCE. (Hybrid Tea). The gold medal rose of France. A very strong, vigorous grower, with handsome green-bronze foliage and exceedingly free flowering. Clear red crimson flowers, borne on long, stiff stems. Very fragrant and keeps well.

F. J. GROOTENDORST (The Baby Rambler Rugosa Rose). Rugosa foliage and habit, compact bush, moderate growth; blooms in clusters of oversized, fairly double red flowers resembling the Crimson Baby Rambler, produced from early summer until fall.

FRANCIS SCOTT KEY. Dazzling crimson globular rose of gigantic size. The rose is deliciously perfumed, strong, vigorous, free branching, with large and handsome foliage. Named in honor of the writer of the Star Spangled Banner.

GENERAL McARTHUR. A grand, new, ever-blooming crimson scarlet rose. In all the rose family we know of nothing that can compare with this in dazzling color, fragrance of flower and profusion of bloom. Is as fragrant as a rose can be, has good-sized flowers, blooms continuously the whole season through, and gives fine stems for cutting.

Crimson and Red

HADLEY. In the Hadley we have a rose that possesses a rich and lasting crimson color, coupled with vigor of growth, robust constitution, and free-blooming habit.

HIS MAJESTY (Red Frau Karl Druschki). Dark crimson, shaded vermilion toward edges and overlaid with a rich, velvety shading; opens well to a large and splendid form, high center; fragrant, upright, vigorous.

MAD. JULES GROLETZ (Red Kaiserin Augusta). This magnificent rose is exceedingly free blooming, with very large, finely formed flowers. The color is a distinct and charming shade of cherry-red.

METEOR. A very velvety red ever-bloomer of the deepest glowing crimson, as fine as a hybrid. Flower very double and petals slightly recurving. A beautiful open rose.

RED COLUMBIA. This excellent type of vigorous growing rose, with long, clean stems and free-blooming, is highly recommended; very fine in bud and beautiful in open flower; fragrant.

RED RADIANCE. Same rank grower as Radiance, bright red flowers, double borne on long stiff stems; one of the finest for cut flowers. Blooms from spring until heavy frost.

SENSATION. A large and brilliant rose. Well supplied with a heavy, luxuriant foliage. The flowers are fine any season of the year. The color is an entrancing shade of red. The bud long pointed and strong, with ample foliage.

Pink

ANTOINE RIVOIRE. A grand fancy bedding rose, very large, very full, perfect in form. Color, flesh tints with orange center and carmine edge.

BRIDESMAID. The pink sport of Catherine Mermet. It is a stronger grower than its parent; has handsome foliage and the flowers are a very lively pink. The most popular pink rose ever introduced.

CECILE BRUNNER. This is the popular Baby Pink or "Sweetheart" rose. Color, blush shaded light salmon-pink; distinct and desirable. Makes a handsome miniature rose; fragrant.

COLUMBIA. Too well-known to need lengthy description; glowing pink, deepening as it opens; a marvel of freedom in growth and bloom, with long stems, nearly thornless, quite fragrant, lovely in the bud state, and handsome in the full open flower, which turns to deep rose.

FRANK W. DUNLOP. Large double rose, like Premier in shape and color; fine cut flower variety. Large foliage, few thorns.

Pink

JONKHERR J. L. MOCK. Although introduced only a few years ago, this beautiful rose quickly found its place among our best bedding varieties. The flowers, which are produced in the greatest freedom on long, stiff stems, are of large size and perfect in form, of a deep imperial pink, the outside of the petals silvery rose-white; highly perfumed.

KILLARNEY. No rose has attracted so much attention as Killarney. The color is brilliant sparkling pink. The flowers are extra large and full, with broad, thick petals and delightful tea fragrance.

WM. R. SMITH. Produces immense quantities of fine flowers of creamy white with pink shading. Has fine, firm, glossy foliage; long flowering stems.

LA FRANCE. Is exceedingly sweet and handsome, and altogether one of the loveliest and most desirable roses one can plant. The color is a delicate shade of peach blossom, changing to amber rose, elegantly tinged with crimson.

MME. CAROLINE TESTOUT. A magnificent hybrid Tea, of the very loveliest shade of pink.

MAMAN COCHET. A magnificent pink rose of the Mermet type. Color very bright rose with shading of yellow in center. Hardy and free bloomer.

PAUL NEYRON. Deep pink, very large and extra fine rose, free bloomer. The rose without thorns.

RADIANCE. A grand free-growing, big-habited rose, with long stems and globular blooms of intense rose-pink color; very fragrant. A fine summer variety and the finest of all the outdoor pink bedding roses. Always in heavy demand.

ROSE MARIE. This is a grand rose of the very highest merit. Color, deep pink, similar to My Maryland.

Yellow

ALEXANDER HILL GRAY. The best and largest pure yellow tea rose yet introduced. Its color is a solid deep Maréchal Niel-like lemon yellow throughout. Strongly scented.

AARON WARD. A color that catches the eye at once, copperage, golden orange in the full flower; fine pointed buds; very popular.

GOLDEN EMBLEM. Flower similar in color to Constance, same crimson stripe on outer petals, high pointed center, Tea perfume. 50c for 2-yr. plant.

GOLDEN OPHELIA. Similar in habit of growth and freedom to Ophelia, but with a pretty golden yellow suffusion.

HUGONIS. A remarkable and very valuable briar rose brought in from China. Grows and spreads quickly to as much as six feet at maturity. Blooms extravagantly in May full length of last year's shoots. Flowers single, ranging from deep gold to canary, with conspicuous stamen tufts.

Yellow

LADY HILLINGDON. A very popular yellow forcing variety, already planted in considerable quantity in this country. It is of very quick, free growth with pretty narrow foliage, and is one of the freest in the Tea section in the continuous production of flowers. The buds are slender and graceful, a deep shade of yellow which does not easily fade. Everybody can grow this pretty yellow rose and have it in quantity.

LUXEMBOURG. Grand golden yellow rose, HT. Strong grower, heavy foliage; a good rose.

MME. BUTTERFLY. Sport of Ophelia. All the color tones of Ophelia are intensified, making it a harmony of bright pink, apricot, and gold. It averages more petals to the bloom. The tight buds are a lovely shade of Indian red, yellow at base. They are unique for corsage and for low table decorations.

MRS. ARTHUR WADDELL. A strong, rampant grower; buds long and pointed; rose scarlet, opening coppery salmon; large and semi-double.

OPHELIA. The queen of fancy roses; orange salmon; noted for its splendid stems. It is the most fragrant of forcing varieties, with the full June-rose fragrance.

SOUV. CLAUDIUS PERNET. One of the most interesting roses ever introduced to the trade. It holds a proud place in the cut-flower market. A "Golden King of Roses" for all who have learned to grow it well. Foliage like holly, continues in bloom, wonderful in build, color and size. The clearest, brightest yellow rose known. 2-yr., 50c.

SUNBURST. This big yellow rose is in a class by itself. It has proven a valuable summer variety and has made many friends.

White

FRAU KARL DRUSCHKI (White American Beauty). Form of flower identical with American Beauty. Color clear white, beautiful in bud and half open.

KAISERIN AUGUSTA VICTORIA. This is one of the grandest of all roses. It is a strong, vigorous grower, producing buds and flowers of enormous size. Color, pure ivory white. We have no hesitancy in saying that this rose is unequalled by any other in its color. A grand garden rose on account of its vigorous growth and hardiness.

THE BRIDE. The flowers are very large and double on stiff stems of fine texture and substance. During extremely hot weather it becomes pinkish-white; at other times a beautiful pure white.

White

WHITE COCHET. The charming new white Tea rose. Another new American rose. Its habit is exceedingly strong and upright, like its parent, Maman Cochet. The flowers are of enormous size, round and delicately tea-scented. It is without doubt the largest white rose, both in bud and flower.

WHITE KILLARNEY. With many growers used in preference to the original White Killarney, as it has many more petals and makes a finer flower for warm weather use.

WHITE OPHELIA. Erect habit, faultless form, stiff long stems; handsome bright foliage; pure white; a perfect rose.

Blended Colors

LOS ANGELES. Flame pink, toned with coral and shaded with gold. Very vigorous growth, and produces a continuous succession of long-stemmed flowers. Buds are long and pointed and expand into a flower of form and ever-increasing wealth of color. 50c each.

MME. EDOUARD HERRIOTT. Coral red, shaded with yellow and bright scarlet. Handsome foliage that makes a vigorous growth. 50c each.

WILLOWMERE. Rich shrimp pink, shaded yellow at center and toning to cream pink towards base of petals. As a summer bedder this variety ranks above all others. A robust garden rose of bushy habit, with beautiful buds, very large flowers and lustrous green foliage.

REV. F. PAGE ROBERTS. Flowers are large and double inner face of petals a soft buff, reverse surface a rich salmon. A fine rose of a vigorous habit, with good shaped blooms, which are carried erect on long stiff stems. Very sweetly scented. 50c each.

SOUV. DE GEO. PERNET. Oriental red, shaded yellow. One of the largest roses and exceedingly striking. 50c each.

WM. F. DRER. An exquisitely beautiful rose of the "Los Angeles" type, but much lighter and generally more strongly tinged with yellow. 50c each.

PRESIDENT HERBERT HOOVER. An outstanding novelty of new color combinations, maroon, orange and gold. Large pointed buds on strong stems and a continuous bloomer. Open flowers are extra large. 50c each.

TALISMAN. Rich shadings of scarlet and gold; fine foliage and vigorous, very vividly colored, exceptional newly created variety. 50c each.

Tree Roses

These tree roses come in all varieties of roses. Single color—\$2.50 each.
Two Color—\$3.00 each.
Three Color—\$4.00 each.



Countess Vandal



E. G. Hill



Hollywood

Otto Locke's New and Novelty Roses

JOANNA HILL. Large, rich creamy yellow, with dark apricot center. Long stems. 60c each.

COUNTESS VANDAL. The sensation of the 1931 Foreign Rose Shows, where it won all medals and trophies. This year it is winning gold medals at all rose shows in Canada and the United States. Long-pointed buds of bronze, copper-salmon, and gold. Beautiful in open flowers. Plant is vigorous and blooms unceasingly. \$2.00 each.

PREMIER SUPREME. By far the best of all the Premier sports. The flowers are magnificent, both in color and form. The color is deep rose with a fine full rounded bud. It is a free, clean grower and is rapidly taking the place of Premier and Matchless. 60c each.

E. G. HILL. A big new red rose of dazzling shade, with a rich, luscious true rose fragrance which recalls the scent of the old-time roses. The bush is sturdy and produces a steady crop of long-stemmed flowers and foliage of fine health and color. We find it one of the best red garden roses, always in bloom, and the flowers always of excellent quality. Everyone who has grown it is delighted with it. 60c each.

HOLLYWOOD. A sport of Premier Supreme and highly recommended by growers who gave it a trial. Produces a large flower, and is a free bloomer with good keeping qualities. Dark rosy cerise, deepening to pure red in cool weather. Can be sold as a red at Christmas. The flowers are fully as large or larger than the parent; produced on long stems. 75c each.

Climbing Roses

CHRISTINE WRIGHT. This sister to Climbing American Beauty is an equally strong grower, and produces a great burst of large, double wild-rose pink flowers, borne individually and in clusters, and of the most attractive quality.

CLIMBING AMERICAN BEAUTY. A seedling of American Beauty crossed with Wichuriana. Same size, color and fragrance as American Beauty. A vigorous climber. Good foliage and profuse bloomer.

CLIMBING COLUMBIA. A hardy, everblooming pink climbing rose. Color, clear imperial pink with paler edges, beautifully dark-veined.

CLIMBING SUNBURST. Same as the well-known bush, strong, vigorous and quite hardy. Beautiful large yellow with bright center, blooms throughout summer and a fine keeper. Highly recommended.

CLIMBING MAMAN COCHET. Same as Maman Cochet, a strong pink climber and good bloomer. Flowers are double and keep well.

CLIMBING WHITE AMERICAN BEAUTY or FREEDOM. A hardy disease-resisting variety similar to Kaiserin, but of more vigorous growth and greater freedom of bloom.

DOROTHY PERKINS. Beautiful, hardy pink, blooming in clusters. An extra good climber for the South.

MARECHAL NEIL. Beautiful, deep yellow; very large, full globular form, sweet, free bloomer; the finest climbing rose.

PAUL'S SCARLET CLIMBER. Winner of gold medal as best new climbing rose at National Rose Society's Exhibition. Flowers are scarlet, shaded crimson; large semi-double. Blooms very long, holding in flower after many June bloomers have dropped their petals. A wonderful rose for trellis or pergola use.

CLIMBING PINK RADIANCE. A lovely rose-pink color. Very free in growth and production of bloom; has good habit, and the lasting qualities of the flowers are wonderful.

CLIMBING RED RADIANCE. An even better rose than its parent, Radiance, in habit, bearing big, globular flowers of deep rose-red on strong, individual canes which are freely produced all summer until frost.

REINE MARIE HENRIETTE. A congenial companion to the Marechal Neil; a sturdy climber and everbloomer. Elegant in bud, finely formed flowers of brilliant crimson.

Price on Climbing Roses: 1-year, 30c; 2-year, 40c.

Location: On the San Antonio-Austin Highway

Otto M. Locke's Ornamental Flowering Shrubs

(All shrubs come balled and burlapped unless specified)

ALTHEA (Rose of Sharon). 1-year plants, 25c. Not balled.

BEULE DE FEU. A good double red variety; opens well.

LADY STANLEY. Large double pink.

TOTA ALBA. Single, pure pearly white; dwarf habit; earliest of all Altheas to bloom and blooms freely. Don't overlook this sort because it is single. It is very desirable.

RUBRA PLENA. Large, double, violet flowers.

LUCY. Large, double rose-red flowers.

JOAN D'ARC. Double white.

PAEONIFLORA. White flower with cherry-red center.

ASTER—Grandiflora Texanum. Improved native aster, profuse mass of bluish flowers; blooms in the fall; grows 4 ft. tall. Clumps, 25c each.

CALLICARPA AMERICANA—French Mulberry. A fine shrub, ornamental with its green foliage and brightly colored berry-like fruit in circular clusters at the leaf joints, appearing late in the fall. Each, 50c.

CREPE MYRTLES. The Crepe Myrtle has reached such a high degree of popularity that there is hardly a flower garden without a few of these lovely flowering shrubs. They are lately being used for hedges, which produce the most striking effect and such a hedge is admired by all who see it. The first flowers appear early in May, and from then until frost the plant is continually a mass of flowers. Comes in Purple, Crimson, Pink and White. 1-year plants, 35c each, \$3.50 dozen; 2-year plants, 50c, \$5.00 per dozen, not balled.

CORAL BERRY. A hardy shrub, that is very useful for borders, hedges and general landscape work; has red berries in the autumn, the bush being covered with brilliant red berries. 2-years, 25c each.

ELDER, AMERICAN. Immense flat-topped cymes of white flowers in early summer; followed in August and September by luscious black fruits. Each, 35c.

FLOWERING ALMOND. Double pink; a shower of color in early spring; very hardy. Price, 75c each.

COTONEASTER (Panosa). White flowers, followed by many scarlet berries in winter; leaves ashy color on under sides, giving plant a grayish color effect; very graceful habit; medium size; very attractive. 50c and \$1.50 for 3-ft. plants.

FLOWERING PEACH. A most beautiful small tree; at blossoming time in May every twig is bright with beautiful flowers; showy and attractive at a great distance. Price, 75c each.



Mock Orange

FLOWERING WILLOW. They bloom constantly from May until late fall; grow on any soil and are long-lived. The lace-like flowers are about an inch and a half long and are borne in clusters. Color, purple or white. Price, 2-yr., 35c.

LONICERA MORROWI (Bush Honeysuckle). Handsome Japanese variety with white flowers during May, but especially valuable for its bright red fruit during the summer and autumn months. Price, 35c each; 2-yr. heavy plants, 50c.

LONICERA (Red Bush Honeysuckle). This upright honeysuckle has pretty fragrant pink flowers, fine for florists; grows in round bush. 2 to 3 ft., 35c each.

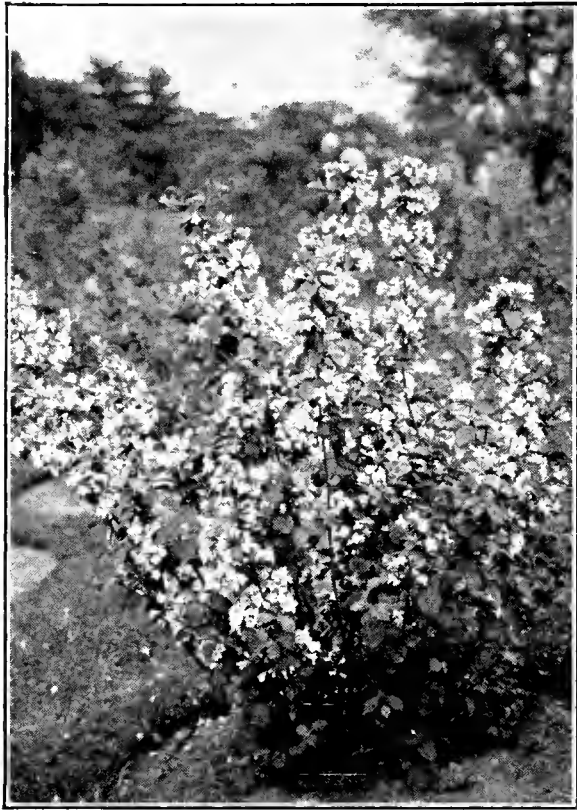
HARDY HIBISCUS (Mallow Marvels). The flowers are of enormous size, gorgeously beautiful and bloom most profusely. White, pink or crimson. 2-yr. plants, 35c. Not balled.

OLEANDERS. Well-known shrub, bearing long, narrow leaves, and clusters of beautiful blossoms. Splendid for foundation planting, lawn specimen, or shrub to alternate with street or park planting. Red, pink or white. 50c each.

PHILADELPHUS GRANDIFLORA (Syringa or Mock Orange). The Philadelphus is of vigorous habit, very hardy, with large, handsome foliage and beautiful white flowers produced in the greatest profusion in the blooming season. It merits a prominent place in all collections of shrubbery. 2-year plants, 35c each.

ABELIA GRANDIFLORA. One of the most beautiful, popular and satisfactory broad-leaved shrubs. The graceful drooping stems and branches are covered with dark, glossy leaves which in winter assume a metallic sheen. From the middle of May until frost this plant produces an immense quantity of tubular-shaped white flowers, about an inch long, which are borne in clusters. We strongly recommend this plant for single specimens, groups or for hedges. Price, 50c to \$1.00 each.

WEeping LANTANA. A fine plant for winter flowering in pots or small hanging baskets or beds. Flowers delicate rose lilac in compact umbels, borne freely all over the plant from drooping flower-laden sprays. 35c each.



Weigelia Rosea

WEIGELLIA. Wonderful, important group of shrubs for specimens and desirable for groups and masses. In spring Weigellias are aglow with a wealth of flowers. Rosea with rose-pink flowers. 2-year plants, 50c.

TEXAS ASH PLANTS (*Leucophyllum Texanum*). This is one of the most striking shrubs we have. The plant has a beautiful ashen-grey leaf, is evergreen and during the summer, after or before rainfall, produces a profusion of lilac flowers which presents a very striking appearance. \$1.00 and up.

SPIREA VAN HOUTTEI. A splendid new garden shrub, and one of the most beautiful of all. Immense bloomer with snow-white flowers. Strong. 25c each.

ANTHONY WATERER. A fine, hardy perpetual blooming shrub, particularly desirable for the door yard and lawn, or wherever fine, hardy flowering shrubs are wanted. Rich, rosy red flowers in large, round clusters; very free bloomer. Fine plants, 50c each.

Lilacs

PURPLE LILAC. A well-known favorite. 35c each; not balled.

WHITE LILAC. Same as above except white flowers. 35c each; not balled.

SUMMER LILAC. (*Buddleia Lindleyana*). One of the most desirable summer flowering shrubs. Beginning to bloom in July, it continues until cut by severe frost. The flowers are of a pleasing shade of violet mauve, and are borne in dense, cylindrical spikes. It succeeds everywhere, and flowers freely the first season planted. Price, 35c each; not balled.

LAVENDER Or CHASTE TREE (*Vitex Agnus Castus*). A very large, showy shrub with compound leaves composed of five to seven leaflets, dark green above and downy grey beneath. The flowers are borne profusely during the late summer, in long, dense, terminal racemes. Color, lilac and white. 3 ft., 25c; not balled.

Hardy Flowering Plants

CALENDULAS. Hardy annuals. 25c dozen.

SWEET WILLIAMS. Mixed colors. 25c per dozen.

SHASTA DAISY. This is the Daisy produced by Luther Burbank, the finest of them all. Large white flowers. Illustrated on back cover. 10c each, 50c per dozen.

TRITOMA. This is an everblooming plant which sends forth peculiar spear-shaped spikes of orange-colored flowers. Very attractive and easy to grow. Sometimes referred to as "Red Hot Fire Poker". 25c each, \$2.50 per dozen.

STOCKS (Double). All colors. 25c per dozen.

VIOLETS. Prince of Wales, finest variety known. 35c per dozen.

HOLLYHOCKS. Latest and best varieties, mixed colors. Both single and double. 50c per dozen.

PANSIES. Giant Flowering in mixed colors. 20c per dozen, 50 for 75c, 100 for \$1.25.

PERENNIAL PHLOX. Clumps. 25c each, \$2.50 per dozen. All colors.



Hollyhock—Double Mixed

Location: On the San Antonio-Austin Highway

BLUEBONNETS. This is the Texas State flower. Grows on poor as well as rich soil. Covered with blue flowers that bloom in spring and there is nothing prettier than a mass of these plants in flowers. They reseed themselves from year to year. 25c per dozen, \$1.50 per 100.



Field of Texas Bluebonnets

Hardy Flowering Plants

CHRYSANTHEMUMS. Fine varieties. Yellow, white, brown, and red. Also pale shades and blended shades. Best for outdoor planting. 10c each, \$1.00 per dozen.

MALVA VISCUS DRUMMONDI. This has large broad leaves, purple, and produces a small fruit which some people call Mexican Apples. The fruit is sweet and edible. 10c each, \$1.00 per dozen.

SALVIA GREGGII. Native of West Texas. Almost evergreen. Covered with dark crimson flowers from spring to frost. Of compact growth that is improved by pruning. Suited for low borders and massing. 35c each.

POINSETTIA PULCHERRIMA. The plant which produces large clusters of red leaves or flowers at Christmas time. Price 35c, 50c and 75c.

BOUGAINVILLEA. Crimson Lake (brilliant crimson), and Braziliensis (reddish-purple). Price, \$1.00 each.

Climbing Vines

KUDZU VINE. The famous Chinese Kudzu grows more in three months than most vines do in five years. Adaptable to porches, arbors, fences, rockeries, old trees, etc. If you wish a vine that will grow anywhere in the bed or poorest soil, then plant the Chinese Kudzu. The large, bold, green leaves afford a dense shade. The flower clusters are deliciously fragrant. Each 25c, \$2.50 per dozen.

QUEEN'S WREATH (*Antigonum leptopus*). This is the Mexican Mountain Rose. It is not, however, a rose, but a quick-growing vine, which produces in the early fall until frost great racemes of rose-red flowers. Tubers, 25c each.

White Queen's Wreath—very rare—\$1.00 each.

CLEMATIS PANICULATA. Beautiful climbing vine with pure white flowers which are borne in great panicles, fairly covering the plant. The delicious fragrance resembles English Hawthorne. 25c each.

CLEMATIS DRUMMONDII. This is the best of our native West Texas Clematis vines. The flowers are white and completely cover the plant. No fragrance. 25c each.

PURPLE WISTERIA. Quick growing climbing vine which produces in the spring of the year elegant drooping clusters of purple flowers. 35c each.

WHITE WISTERIA. Same as above with white flowers. 35c each.

COCCINEA (Honeysuckle). This vine needs no description, for the honeysuckle is too well known. Coccinea has red flowers and is a good bloomer. 50c each.

HALLEANA (Honeysuckle). Blooms from May until November. Always evergreen and one of the most fragrant; flowers white, changing to yellow. 35c each.

RED TRUMPET VINE (*Bignonia radicans*). A vine which is used to cover dead trees and old buildings; has clusters of red flowers. 25c each.

FRENCH TRUMPET VINE (*Bignonia grandiflora*). Giant flowering grafted trumpet vines. Flowers of enormous size. Very showy and colorful. 2-year strong plants, \$1.00 each.

PASSION FLOWER (*Passiflora*). A fast-growing vine with deeply cut, sea-green leaves and fragrant blue flowers. 25c each.

Clinging and Creeping Vines

FICUS REPENS (Climbing Fig). To cover foundation of building or wall, this is the best and most popular vine obtainable in the South. Small-leaved evergreen, very rapid grower. 35c each.

ENGLISH IVY. The hardy evergreen vine that remains so all the year, making it one of the most valuable of all hardy vines. Covers rock and brick wall most completely. For cemetery purposes also. 25c each, pot grown.

BOSTON IVY. Grows more rapidly than the English, but loses its foliage in winter. 35c each.

VINCA EVERGREEN. Dark green foliage. 10c each.

VINCA VARIEGATA. Green foliage with white shadings. 10c each.

VERBENA. Mammoth flowering that blooms freely throughout the summer. Assorted colors, red, white, pink, or purple. 10c each, \$1.00 doz.

Otto Locke's Exceptionally High Quality Bulbs



Dahlia

PRIDE OF CALIFORNIA. Mammoth rich "American Beauty" red; very tall vigorous grower, flowering continuously from early summer until late fall. Its perfectly formed flowers are produced on strong stems, well above the foliage. Decorative type. Exceptionally large. 25c each.

Favorite Dahlias

ACHIEVEMENT. Largest collarette dahlia grown. Rich velvety-maroon with collar of snowy-white. 25c each.

A. D. LIVONI. A favorite old-time, quilled, shell-pink, ball-shaped dahlia. 25c each.

FRANK A. WALKER. A fine decorative cut-flower dahlia, which is a continuous and abundant bloomer. Very good for cut flower purposes. Good florist's variety. In color a beautiful shade of lavender pink, deeper pink at the center. 25c each.

LIBELLE. Abundant flowering, rich bright purple. One of the best for cutting. 25c each.

SOUVENIR De GUSTAV DOAZON. Large orange-red decorative. Very abundant and continuous bloomer. 25c each.

YELLOW DUKE. Pure golden yellow. 25c ea.
Red and Red Shades—10c each or \$1.50 dozen.
Orange and Orange Shades—15c each or \$1.50 dozen.

Yellow or Yellow Shades—20c each or \$2.00 dozen.

White—15c each or \$1.50 dozen.

Maroon and Dark Shades—15c each or \$1.50 dozen.

Purple and Purple Shades—15c each or \$1.50 dozen.

Pink and Pink Shades—15c or \$1.50 dozen.

Mixed Colors—\$1.00 dozen.

Exceptional Dahlias

BASHFUL GIANT. One of the largest flowering decorative dahlias in existence. Its gigantic blooms are excellent for exhibition, not only because of size, but also for its beautiful coloring. An exquisite apricot with buff and gold tints. One of the best. A very free and continuous bloomer. 35c each.

ELIZABETH SLOCOMBE. Largest and best of its color to my knowledge and one that I can highly recommend at any price. Its immense flowers are produced on exceptionally long stiff stems, making it very desirable for cutting and grower. The brilliant purplish-garnet coloring makes it very effective in the garden. As the flower matures it fades to a lovely shade of garnet. A very deep flower of decorative type. 35c each.

MRS. CARL SALBACH. A beautiful lavender-pink decorative dahlia which has blends of deeper lavender toward the center. This sensational dahlia has remarkable length of stem, and is a perfect cut-flower and exhibition type, as it lasts so long after cutting. These stately, beautiful blooms are worthy of a place in any garden. 35c each.

MRS. I. DE VER WARNER. A blossom of soft orchid coloring and unquestionably a dahlia of great merit. Its charming color, very large flowers, and long, strong stems make it the cynosure for all eyes at exhibits. A lovely, deep, mauve-pink, of perfect form, a true decorative type which is impressive in its very large size; without exception a leader among the better dahlias. Extremely strong growing, very abundant blooming, and lending itself to either exhibition or garden uses with equal success. 50c each.



Double Dahlia



Gladiolus

Iris

My Iris collection contains the finest varieties known, which come in blended, mixed and solid colors.

SUSIANA. The standards are almost round, more than three inches wide and slightly longer. Unique in both coloring and shape and quite handsome. Entirely different from any other Iris. Standard and falls are covered with intricate veining and speckling of deep dark-blackish brown over grayish white ground. \$2.00 each.

SPANISH. Very showy. Narrow, grassy-like foliage. Medium-sized blue flowers. 10c ea.

MILDRED PRESBY. The standards are creamy-white and the falls are rich dark velvety pansy-violet, with a narrow lavender-white edging. 75c each.

KING KARL. Apricot standards, dotted-pink and brownish-red; ivory falls, edged with maroon dots. A lovely and distinctive Iris. \$1.00 each.

MAGNIFICA. Brilliant crimson toned bicolor. A very lovely variety. 75c each.

AMBASSADEUR. It is a gigantic flower with a blending of colors that makes any description inadequate. It is a dark blend, but placed where the sun's rays show through the effect is rich ruby-red. In recent Iris shows this received the most votes for the most popular Iris in the world. 50c each.

GOLD IMPERIAL. It is a deep, rich chrome-yellow, with an exceedingly brilliant orange beard. One of the most admired yellow Iris. 75c each.

GERMAN IRIS. Very pretty when in bloom in early spring. Clear, beautiful white flowers, resembling orchids. Vigorous growers, and good bloomers. Also come in blue, yellow, and lavender. 10c each, \$1.00 per dozen.

Gladiolus

Our supply contains the best varieties of gladiolus, some of which are described below. If there is any variety that is not listed, order your variety and it will be filled with that variety. All bulbs are large, well matured, and healthy.

ALICE TIPLADY. A beautiful gladiolus with rich orange flower and pink shadings which gives a beautiful salmon effect.

CHICAGO WHITE. A pure white gladiolus. Rare.

HERADA. A favorite and rare color, very beautiful orchid lavender, or deep lavender purple. Very desirable.

JOE COLEMAN. Brick red with slight throat markings.

MAIDEN'S BLUSH. Very handsome, blush pink with lighter throat.

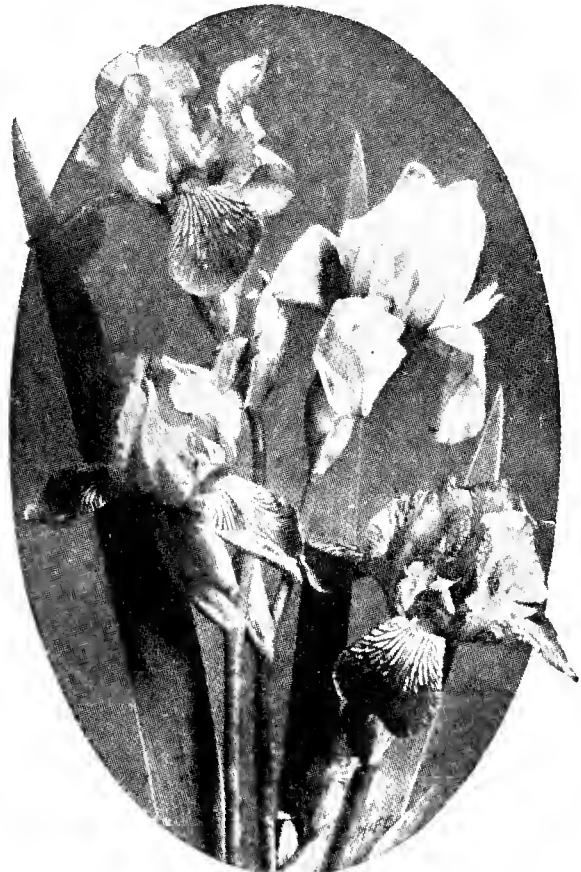
SOUVENIR. Beautiful rich golden yellow. Most exquisite when used with larkspurs.

One color, per dozen, 35c, \$3.00 per 100; mixed colors, per dozen, 25c, \$2.00 per 100.

Iris

FRIEDA MOHR. A gigantic deep-pink toned Iris, of perfect form, good texture, and long flowering season. \$1.75 each.

IRIS OPERA. This rich violet-red tones bicolor is deservedly one of our most popular Iris. Even the beard is of a distinctly reddish tone. 50c each.



Iris

Lilies

AMARYLLIS JOHNSONII. Brilliant red flower, 5 inches in diameter, with a distinct white stripe in the center of each petal; very fragrant. Large, 25c each, \$2.50 per dozen.

CRINUM LILY. Sometimes called the Southern Lily or Angel Lily. The sword-shaped leaves form a rosette from which very large fragrant flowers appear in immense clusters. Fine for planting along fences and center of beds. Soft, delicate pink with a light red stripe down through each petal. 20c each, \$2.00 per dozen.

EASTER LILY. Sometimes called Creole Lily. This lily is the best for outdoor planting in the South. The flowers are of purest white. No flower garden is complete without this queen of the lily family. 20c each, \$2.25 per dozen.

TIGER LILY. Large, orange with brown spots. Very showy; double. 25c each.

CALLA ELLIOTTIANA or GOLDEN CALLA. Rich golden yellow flowers, with white spotted foliage. 50c each.

WHITE SPIDER LILY. This grand lily forms large, imposing clumps that are a mass of clustered heads of pure white fragrant flowers. 20c each, 6 for \$1.00.

YELLOW DAY LILY. One of the hardiest of all lilies; single. Once planted you have it always. Rich gold color, striped inside. 10c each, \$1.00 dozen.

Same as above except double, 15c each.

EQUESTRIS. Often called Barbados or Gloriosa Lily. Brilliant orange-scarlet flowers with a green and white throat. 25c each.

NARCISSUS—Paperwhites. Dainty white flowers appearing very early in spring and giving long season of bloom. Extra large bulbs, 2 for 15c.

KING ALFRED. Most beautiful of all the many narcissus. Large white flowers with long double nose. Most attractive and out of the ordinary. Exceptionally fragrant. 20c each.

SOLEIL D'OR. Beautiful clear yellow flowers borne in clusters. Very attractive for cut flowers. Keep well and bloom for a remarkable length of time. 15c each, or 2 for 25c.

Darwin Tulips

These beautiful Tulips are among the most beautiful of spring-flowering bulbs. No spring garden is complete without a bed of these showy blooms. Plant in fall only. 50c per dozen.

PRIDE OF HARLEM—Old rose.

CLARA BUTT—Salmon rose.

PAINTED LADY—Cream.

BERTIGON—Fiery red.

INGLESCOMBE—Yellow.

REV. EWBANK—Lilac.

Cannas

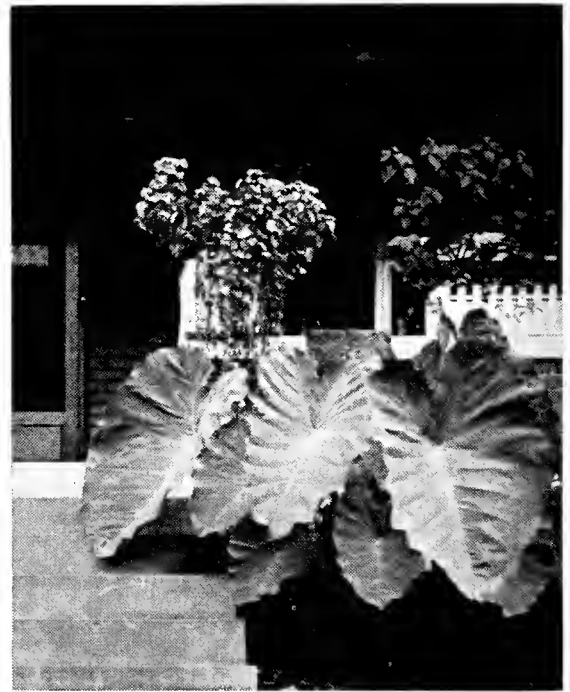
This is one of the most thankful flowers. It produces its flowers from spring until frost. Comes in so many exquisite colors that everyone admires them. Needs lots of water. Come in red, pink, white, yellow, crimson, salmon, orange, and yellow with orange-red spots, also one with red and yellow flowers on the same cluster. Order by color or name. 10c each, \$1.00 per doz.

Tuberoses

MEXICAN TUBEROSES. Unlike any other variety it has stiff, tall stems; flowers pure white, single, delightfully fragrant, blooms continuously. Is valuable either for pots or open garden. Large bulbs, 5c each; 35c per dozen, or \$1.50 per 100.

Caladiums

CALADIUM ESCULENTUM (Elephant's Ear). One of the most effective plants in cultivation for the flower border or for planting near a pool or on the lawn. Needs lots of water. 15c each; Jumbos, 25c (See Figure No. 1, Page 23).

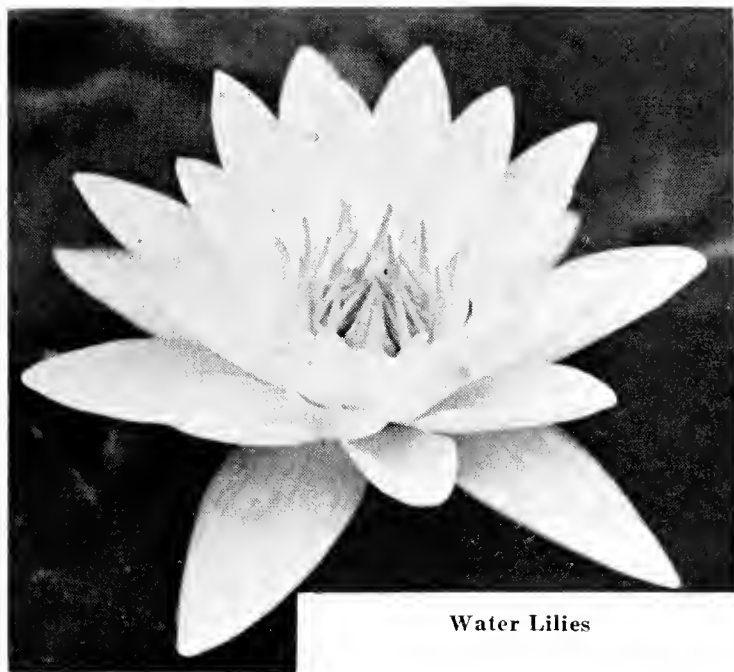


Caladium Esculentum

FANCY-LEAVED CALADIUM. These come in all the colors of the rainbow, making fine plants for separate pots, window boxes or vases. They are very showy, and make attractive ornaments. 20c each.

BANANA ORINCO (Musa). The hardiest and most common sort. Plants of large size with dark green leaves, very robust and easily grown. Strong suckers. 50c each.

POMO GREEN. Especially good for Roses. Insures complete protection against Black Spot, Mildew, leaf-eating insects and aphids. May be dusted or sprayed. Write for full particulars. Pomo Green with Nicotine, 75c per pound, \$3.00 for 5-lb. can. Pomo Green without Nicotine, 50c per pound, or \$1.75 for 5-lb. carton.



Water Lilies

ESCARBOUCLE. A most attractive and meritorious day-blooming variety. The flowers are most striking in color, being a uniform vermilion-red. A free bloomer and strong grower. One of the most popular. \$1.50 each.

WATER HYACINTH. Very interesting and beautiful; floats on the surface of the water and produces fine spikes of rosy lilac hyacinth-like flowers. 10c each, 75c per dozen, \$5.00 per 100.

WATER SNOWFLAKE. A lily-like plant, the detachable leaves of which form new plants, covered with dainty white flowers fringed like a giant snowflake. Shipped as floating leaf which soon sends down roots in shallow water. 10c each.

PARROT FEATHER. Quite successful when planted in a tub or water-tight hanging basket. The growth soon goes over the edges in the form of long trailing stems. Extremely valuable for trailing over a fountain. 10c each, \$1.00 per doz.

Colorful Plants For Your Pool Water Lilies and Aquatic Plants

The following are some of the many varieties of water lilies we will be able to supply you with.

AUGUST KOCH. This day-blooming tropical lily is a remarkable bloomer. It is one of the lilac or violet shades. The flowers, which are from 7 to 8 inches in diameter, will remain open for several days. Can readily be grown in a suitable tub. \$1.50 each.

GEORGE HUSTER. A free-growing and free-blooming variety with flowers that are from 10 to 12 inches across and crimson in color. Surely this is the most desirable member of the night-blooming water lilies. \$1.25 each.

JUNO. The most perfect modern flower developed by cultivation from the sacred white lotus of Egyptian tradition. Blooms easily 8 to 12 inches across and persists all summer and fall, making the plant a magnificent sight in the morning. Has flowers of great decorative charm since it is composed of very broad, heavy petals of a clear white with saffron yellow stamens. \$1.25 each.

CHROMATELLS. This clear, rich yellow variety is the best variety of this shade ever grown. Flower appears very striking against the leaves, which are beautifully marbled in deep green and brown. This is a day bloomer. \$1.25 each.

PURPLE WATER HYACINTH. A creeping plant without the floating bulbs of the ordinary Water Hyacinth, but with more handsome blooms. 25c each.

AMERICAN LOTUS. The perfect yellow flowers of this variety attain a diameter of 8 to 10 inches. Sometimes this is known as the Water Chinquapin, especially in those parts of the country where it grows in the wild. 75c ea.

WATER POPPY. The leaves float upon the surface of the water. Flowers are large and yellow, similar to the poppy. It is in flower almost continuously. 15c each.

Otto Locke's Hi-Tested Flower Seeds

I handle a complete line of quality flower and vegetable seeds in bulk at current market prices, also in 5 and 10-cent packets. Below are the seeds in which I specialize:

ANTIGONON (Queen's Wreath). A climber with beautiful rose-colored flowers in racemes. Blooms all summer and after frost dies it down, it will come up again next year from its tubers. \$1.50 a pound.

HOLLYHOCK. Flowers single and double, great variety of colorings. Annual.

HIBISCUS. Improved, hardy hibiscus or mallow marvels. Large flowers. White, pink, crimson and scarlet.

LILLIPUT DOUBLE 12-INCH ZINNIAS. The plants form handsome little bushes and fairly bristle with tiny, short-stemmed, very double flowers hardly exceeding a daisy flower in size. They are very pretty plants; bloom all summer until late in the fall. Mixed colors.



Lilliputs—Double Zinnias

Location: On the San Antonio-Austin Highway

Otto Locke's Hi-Tested Flower Seeds

SNAPDRAGON. Most desirable for its variety of color and succession of bloom. Very fine sorts. Mixed colors.

SWEET PEAS. Grandiflora and Spencer sweet peas of the very best varieties. Mixed and single colors.

ZINNIAS. Large, colossal flowers. No other flower will stand the summer heat as well as the large Zinnias. They should be planted every month during summer to have flowers until frost. Our Mammoth Colossal Zinnias were admired by all visitors. We have them in a fine mixture of all the best colors, and in separate colors.

TEXAS BLUEBONNET. A beautiful low growing plant with its upright spikes of deep blue flowers that has become very popular for planting. \$1.00 per pound.

ZINNIAS, DAHLIA FLOWERED. The plants of this new race are very sturdy and produce many flowers with stout stems. In formation the broad petals are closely imbricated, sometimes almost seeming to be piled one upon another. The flowers often measure 6 to 8 inches in diameter. Separate and mixed colors. 15c per packet.

Otto Locke's High Germinating Garden Seed

DANVER'S HALF LONG CARROTS. The most productive variety, adapted to all classes of soil. Sweet and tender, deep orange in color.

EARLY WHITE SPINE CUCUMBERS. One of the best sorts, vigorous grower and fruiting early. Flesh tender and of excellent flavor. Used in planting for home garden and market.

RUBY KING SWEET PEPPER. Large and attractive. Fruits 4 to 5 inches long. Flesh is thick and mild flavored.

TOMATO SEED. Following are best varieties, having been tested in our gardens: Marglobe, McGee, Gulf State, Break o'Day, June Pink, New Stone, and Baltimore.

BLOOMSDALE SAVOY SPINACH. Large, round, thick, deep green leaves. Earliest and most popular.

Asparagus (Garden Variety)

Quite popular vegetable that is no trouble to grow. Strong, hardy roots. 20c each, \$2.00 per dozen, \$5.00 per 100.



Tomato—Marglobe

Insecticides and Fungicides

CYANOGEN A-DUST. For rats, mice, moles, ants, flies, fleas, sparrows, snakes, groundhogs, chinch bugs, bedbugs, wasps, melon aphid, grape-leaf hopper, gophers, etc.

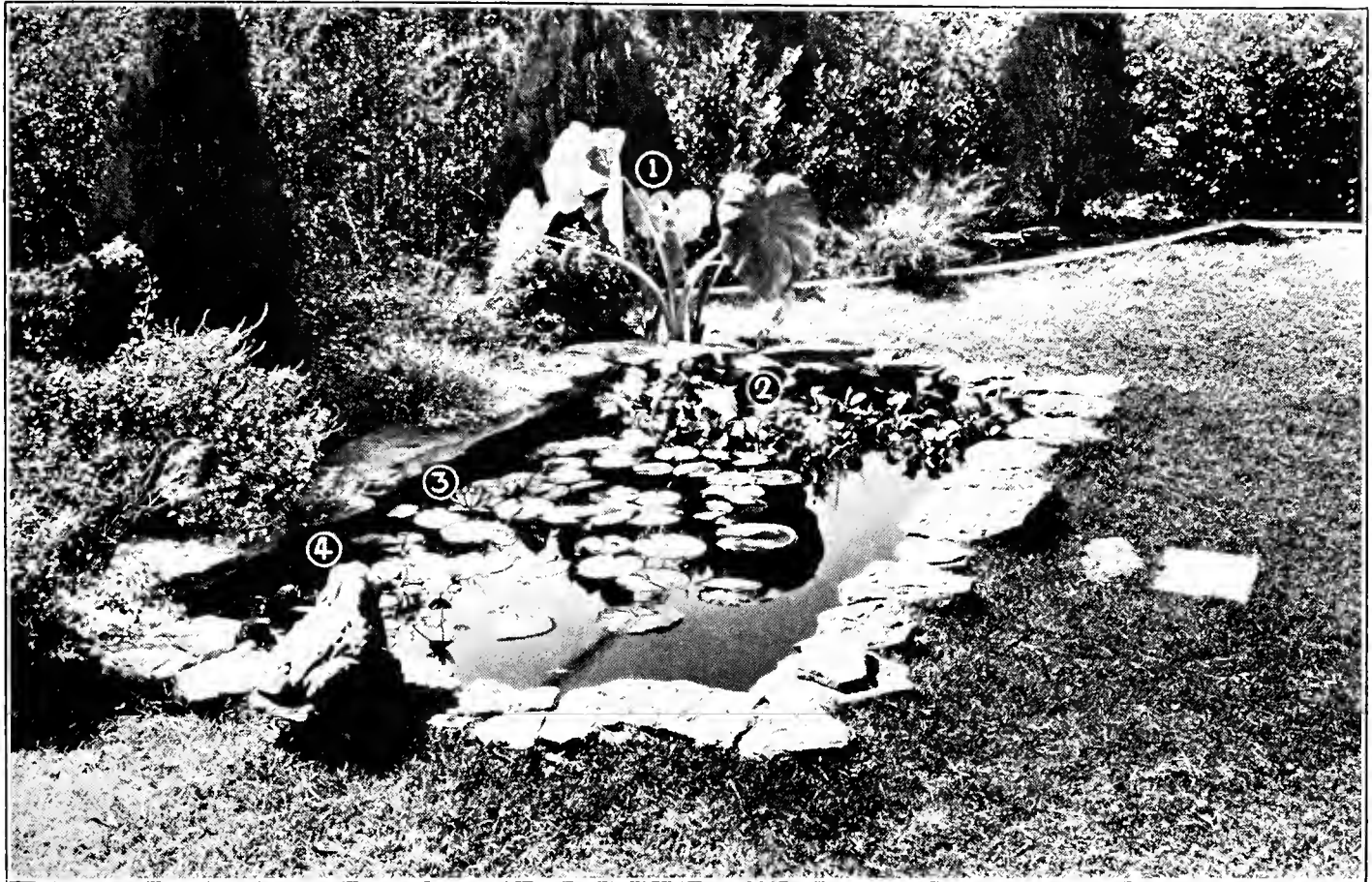
For the control of Wireworm plant a bait crop of beans, corn or peas before the garden is planted, covering the bait crop to a depth of about 3 inches, in rows about 36 inches apart. Within one week the Wireworms will be attracted to the bait crop and at this time apply Cyanogas by means of a garden seeder or by similar method, directly into the bait rows and about one inch below where the bait was planted. In the small garden, where no seeder is available, open a narrow trench deeper than the bait level, close to and on each side of the bait row, and apply Cyanogas at the rate of one pound to each 100 feet of row. Cover immediately with the earth dug from the trench and leave in for

three or four days, after which time seeds or plants may be planted without injury to them. Remember that Cyanogas is injurious to growing plants and it must not be used except when there are no plants growing.

For field operations, where the bait rows are about three feet apart, it requires about 90 pounds of Cyanogas per acre. For further information ask for bulletin on Wireworm Control. 1 lb., 75c; 5-lb. package, \$2.75, f. o. b. New Braunfels, Texas. Cannot be mailed.

POMO GREEN. Especially good for Roses. Insures complete protection against Black Spot, Mildew, leaf-eating insects and aphid. May be dusted or sprayed. Write for full particulars. Pomo Green with Nicotine, 75c per pound, \$3.00 for 5-lb. can. Pomo Green without Nicotine, 50c per pound, or \$1.75 for 5-lb. carton.

Otto M. Locke's Special Collections



No. 1. Caladium

No. 2. Water Hyacinth

No. 3. Water Lily

No. 4. Water Poppy

Aquatic Plants

Special Collection for \$1.00

2 Caladium Esculentum, 1 Yellow Water Lily,
2 Water Hyacinths, 4 Parrot's Feather, 2 Cannas.

Extra Large Collection for \$2.00

3 Caladium Esculentum, 1 Yellow Water Lily,
4 Water Hyacinths, 5 Parrot's Feather, 5 Cannas,
1 Banana Plant, 1 Clump Umbrella Grass, 1 Pink
Water Lily, 1 Blue Water Lily.

Rose Collections

Extra Special Collection of "Novelty Roses"
for \$3.00 Postpaid

1 Herbert Hoover, 1 Rev. F. Page Roberts, 1
George Pernet, 1 Claudius Pernet, 1 Red Colum-
bia, 1 Talisman.

Special Collection of 6 Field-grown Roses
2 Years Old for \$1.75 Postpaid

1 Red Radiance, 1 Mrs. Chas. Bell (shell pink),
1 Kaiserin Augusta Victoria (white), 1 Sunburst
(yellow), 1 Pink Radiance, 1 Francis Scott Key
(red).

Extra Large Collection of 12 two-year-old Field-
grown Roses for \$3.75 Postpaid

2 Red Radiance, 2 Mrs. Chas. Bell (shell pink),
1 Luxemburg (yellow), 1 Kaiserin Augusta Vic-
toria (white), 1 Columbia (pink), 2 American
Beauty (red), 2 Lady Hillingdon (pale yellow),
1 Pink Radiance.

Bulb Collections

Special Collection for \$1.00

5 Tuberoses, 1 Dahlia, 5 Gladiolus, 1 Amaryllis
Johnsonii, 1 Angel or Crinum Lily, 1 Spider Lily,
2 Tulips.

Extra Large Collection for \$2.00

12 Tuberoses, 2 Dahlias, 10 Gladiolus, 1 Am-
aryllis Johnsonii, 1 Angel or Crinum Lily, 2
Spider Lilies, 2 German Iris, 1 Spanish Iris, 1
Tiger Lily, 2 Caladium Esculentum, 2 Narcissus,
5 Tulips.

Fruit Tree Collection

Grand Special \$10.00 Collection for \$3.75 Only,
Shipped by Express

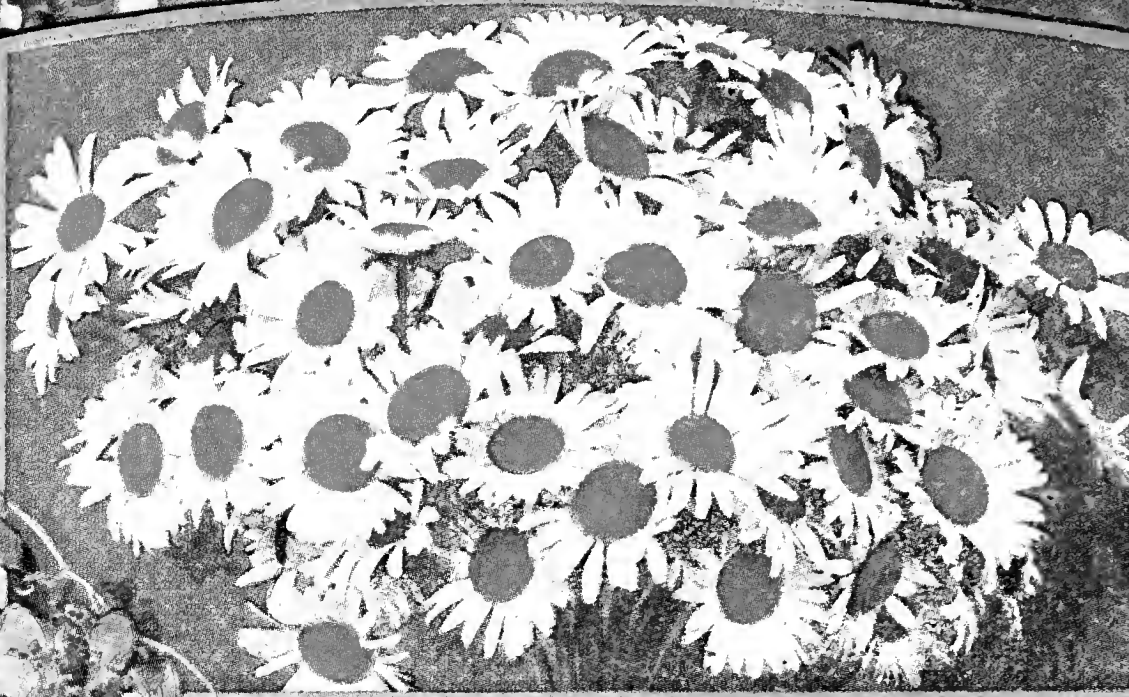
4 Peach Trees (Early and Late), 2 Plums (as-
sorted), 2 Pears (Assorted), 2 Figs (Assorted),
4 Grapes (Assorted), 12 Dewberries, 1 Apricot.

Shrub Collection Special at \$1.75 Postpaid

1 Bridal Wreath (white), 1 Chaste Tree or
Vitex (lavender), 1 Crepe Myrtle (pink), 1
Persian Lilac (purple), 1 Hardy Salvia (red),
1 Hardy Hibiscus (pink).

Cactus Collection Special at \$2.00 for one
dozen varieties.

Spineless Cactus, 10c a slab, \$1.00 per dozen,
\$8.00 per 100.



Top: Shasta Daisy.
See Page 16 for
description and
prices.

Left: Queen's
Wreath. See Page
17 for description
and prices.

Bottom: Hardy
Hibiscus. See Page
15 for prices and
description.

